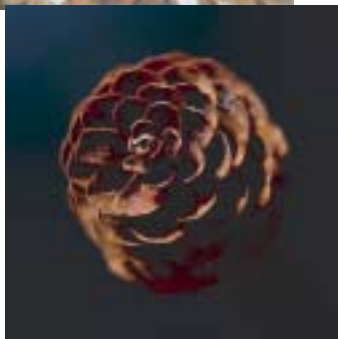


forexpress

Your second-nature network.SM



ForestExpress Timber

The forest industry's trading and
transaction processing network



ForestExpress

Timber is the forest industry's trading and transaction processing network. We enable buyers and suppliers, both large and small, to work more efficiently, save money, better manage their supply channels, and create more opportunities regardless of market conditions.

ForestExpress **Timber** services include the **Market Center**, **Trading Center**, **Contract Fulfillment Center**, and **Scale Ticket Clearinghouse**.

Our **Market Center** provides customizable access to valued industry information and tools such as news, reports, weather, calculators, mapping, and SFI information, for our community of members. It is the starting place for launching your ForestExpress services, and managing your work activities.

Our next generation **Trading Center** hosts real-time transactions for delivered and roadside products as well as stumpage and land. Both buyers and sellers have the opportunity to initiate offerings and to choose from a variety of formats such as multi-product offerings, sealed-bid auctions and e-Negotiations. Wood order allocation and requests for supplier certification information are now easily handled using available features. Transactions can now be completed on the basis of factors extending beyond just price, into areas such as product quality and trading partner attributes. Market discovery and haul distance rationalization are key Trading Center benefits.

The **Contract Fulfillment Center** is an integrated paperless service that enables wood buyers to manage wood procurement contracts and track deliveries against these contracts. When coupled with the Trading Center, the complete procurement cycle is Web-enabled from market assessment to offering creation to contract fulfillment tracking.

The **Scale Ticket Clearinghouse** offers wood suppliers the ability to view or download scale ticket information into their computers or directly into their accounting software. In combination with the Trading Center and the Contract Fulfillment Center, wood suppliers are able to seamlessly manage production against outstanding contracts or against deals created in the Trading Center, even specifying the tract of origin.



From forest to factory, customers use the ForestExpress network for buyer-supplier collaboration, to enhance existing relationships, and to touch more trading partners more often at a lower cost.

Timber Features

- Flexible deal structures including auctions, fixed-price offerings, multi-product offerings or e-Negotiations
- Factor-based trade settlement including product quality, trading partner attributes or price
- Single, simple interface to balance wood order allocation and spot market trading, depending on market conditions
- View or download scale house data into your accounting software or other program
- Issue paperless contracts integrated with your databases
- Access services, industry tools, data, and information from one central location

Timber Benefits

- Completely Web-enabled procurement cycle. Conveniently manage transactions that occur both within and outside ForestExpress, from market assessment through trading and fulfillment - save time, save money, and trade smarter
- Touch multiple trading partners simultaneously and manage complex responses at once - reduce costs and increase time for value-added activities
- Create efficiency with a single interface; integrating multiple systems through the ForestExpress hub



For more information on how ForestExpress can power your timber business, contact us at 1.866.eFOREST [1.866.336.7378] or e-mail us at timber@forestexpress.com



Key Features

Trading Center

- Delivered and roadside product auctions, fixed price offerings, multi-product offerings and e-Negotiations
- Stumpage and land sales conducted using sealed bid and pay-as-cut formats
- Allocate quota and wood orders or manage supplier qualifications and certifications
- Trading Center flexibility makes it even easier to move more of your wood volume online

Contract Fulfillment Center

- Issue paperless contracts integrated with your databases
- Automatically generate contracts from Trading Center transactions
- Collaborate with suppliers on fulfillment

Scale Ticket Clearinghouse

- Buyers automatically send scale house ticket data from their back-end system to the ForestExpress integration hub
- Suppliers view or download their scale house data into Automated Accounting Systems software or other formats

Market Center

- A single interface through which forest industry professionals manage their business and stay in touch with the forest community

Key Benefits

Trading Center

- Greater market reach - products find their highest and best use faster than ever
- Marketplace transparency leads to better information and quicker decision making
- Haul distance rationalization reduces costs for both buyers and suppliers
- Easier and less expensive to disseminate a tract sale prospectus and make it visible to all potential buyers

Contract Fulfillment Center

- Manage a larger procurement area, easier and faster than before
- Bring more information to one point, at one time, for better decision making
- Allocate wood orders faster and reduce phone calls
- Data entry accuracy - eliminate multiple entries

Scale Ticket Clearinghouse

- Collaboratively work to identify and resolve errors, delivery issues, or quality issues faster
- More timely scale ticket exchange between buyers and suppliers
- Reduce time spent entering data manually - increase accuracy

Market Center

- Easy access to services, tools and information

forestexpressSM

500 Northridge Road, Suite 400
Atlanta, Georgia 30350
1.866.eFOREST [866.336.7378]
www.forestexpress.com